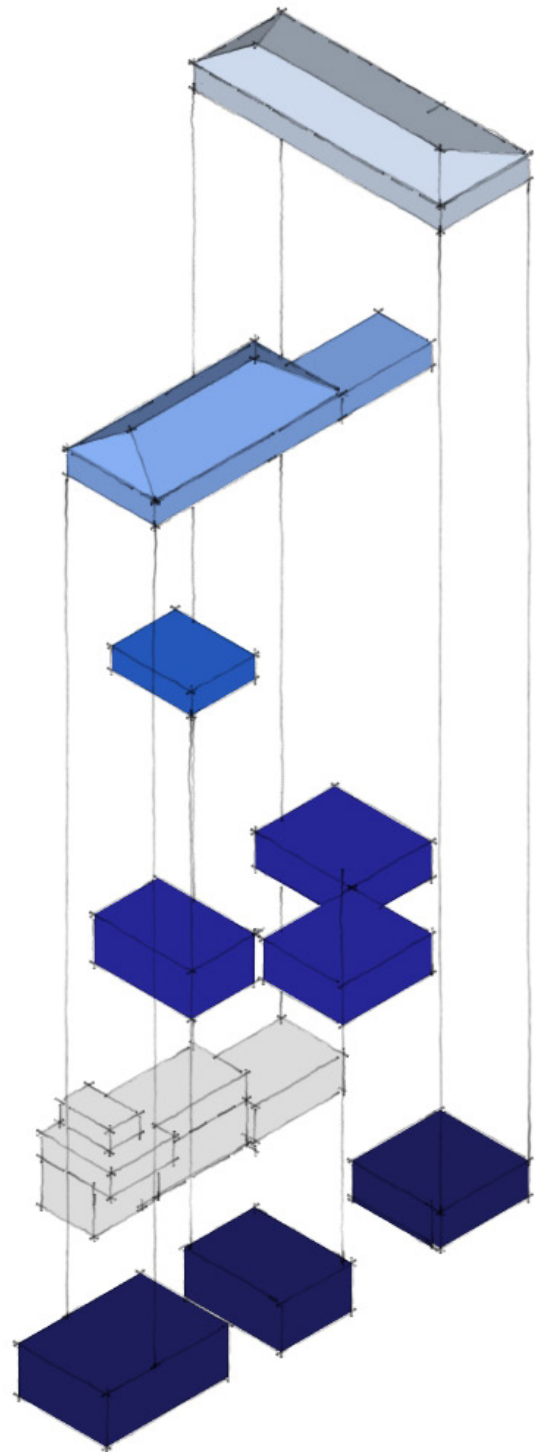


PRIVATE



PUBLIC



WAILUKU I KA MALU O KE AO

Wailuku sheltered by the clouds. Understanding ao as clouds as well as light, we can also interpret this as Wailuku, protected and sheltered by enlightenment.

PU'UKĀNE + NĀNĀHOA

Pu'ukāne as a kino lau of Kāne, akua of freshwater flowing above ground and Nānāhoa as the phallus of Kanaloa, akua of freshwater flowing below ground.

KAWAHINEKUAPU'U

Recipient in LCA #2459 ('āpana 2): "Parcel 2. Taro land at Pe'epe'e an 'ili." Lo'i Pō'alima documented on site and neighboring vicinity that fed the community.

KAMAAKAMAHI'AI

The ka'ao illustrates that the wealth and success of a chief comes from those who work the lands and seas as well as documented resource stewardship practices.

PŌHAKU O MAKAKŪ

In the mo'olelo of Makanikeoe, he emerges in the plains of Kama'oma'o in a place marked by a boulder, possibly Pōhaku Makakū, with water ponding on top of it.

EXPAND



COMPRESS

